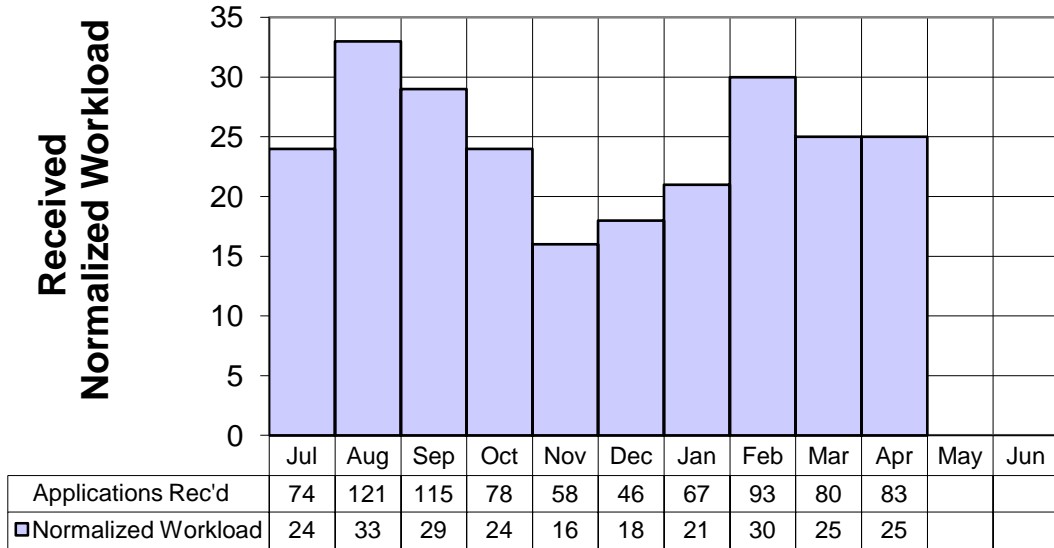
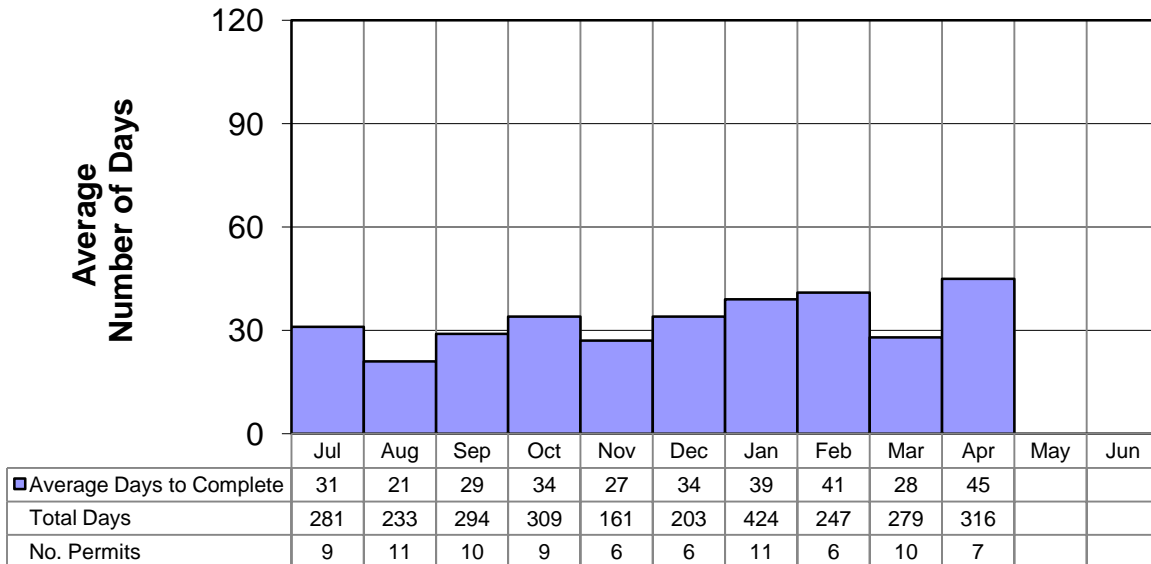


FY 2012 Air Quality NSR Normalized Workload

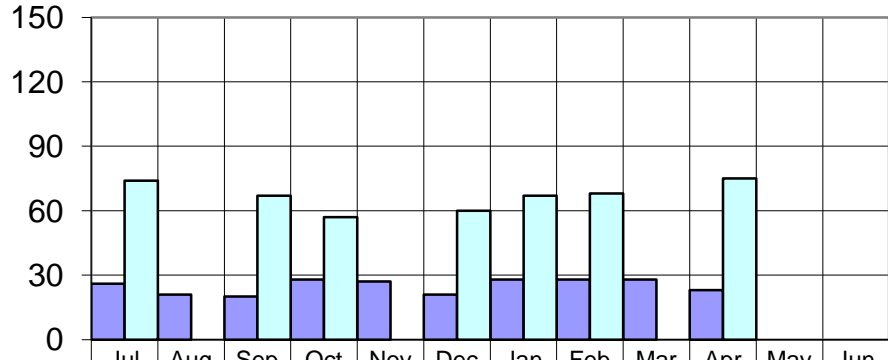


FY 2012 Air Quality NSR Average Number of Days to Rule Complete



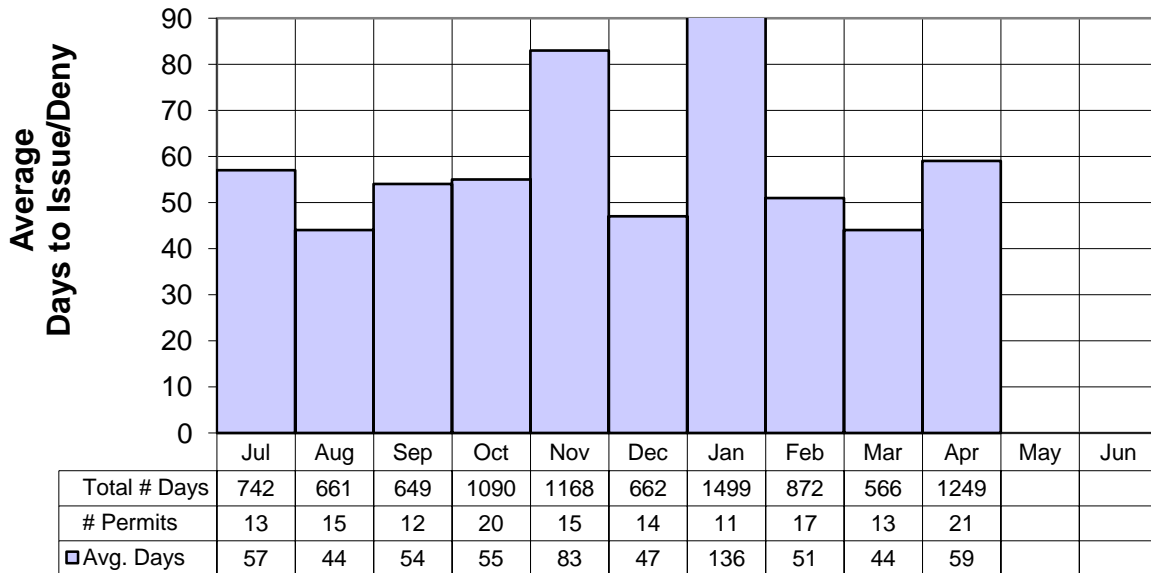
**FY 2012 Air Quality
Average Number of Days to Rule Complete by Category
(Complete First-Time Vs. Previously Ruled Incomplete)**

**Average
Days To Rule Complete**



■ Avg. Days-Complete First Time	26	21	20	28	27	21	28	28	28	23		
□ Avg. Days-Previously Ruled Incomplete	74	0	67	57	0	60	67	68	0	75		
First Time-Total Days	207	233	160	195	161	83	223	111	279	91		
Number Permits	8	11	8	7	6	4	8	4	10	4		
Prev Incmpt-Total Days	74	0	134	114	0	120	201	136	0	225		
Number Permits	1	0	2	2	0	2	3	2	0	3		

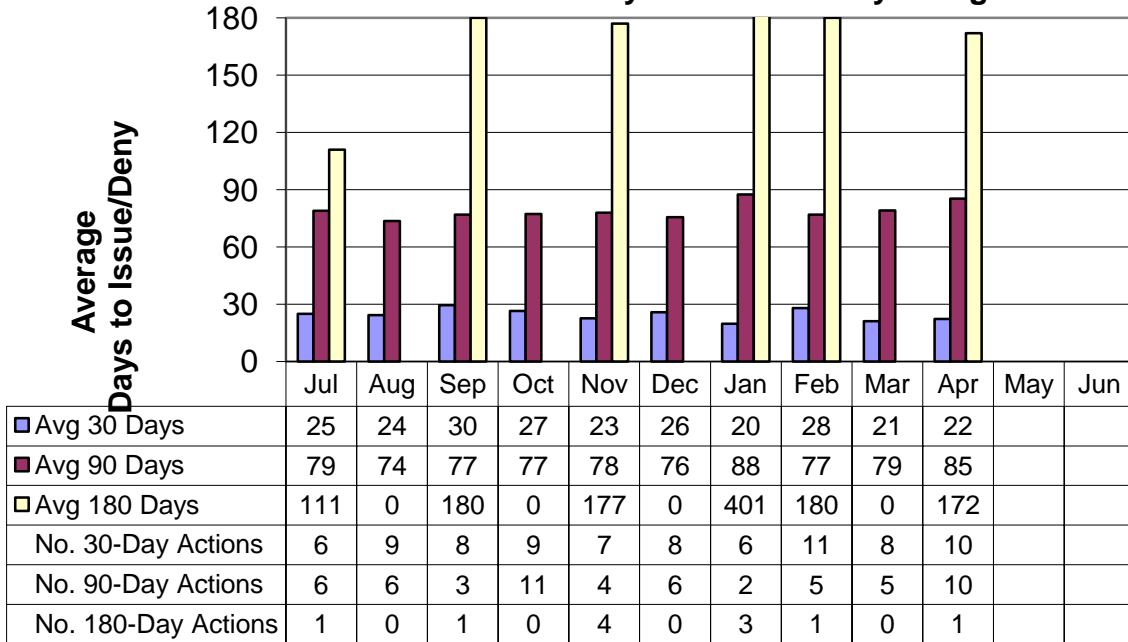
**FY 2012 Air Quality
Average Number of Days
to Issue or Deny NSR Permits ***



Total # Days	742	661	649	1090	1168	662	1499	872	566	1249		
# Permits	13	15	12	20	15	14	11	17	13	21		
□ Avg. Days	57	44	54	55	83	47	136	51	44	59		

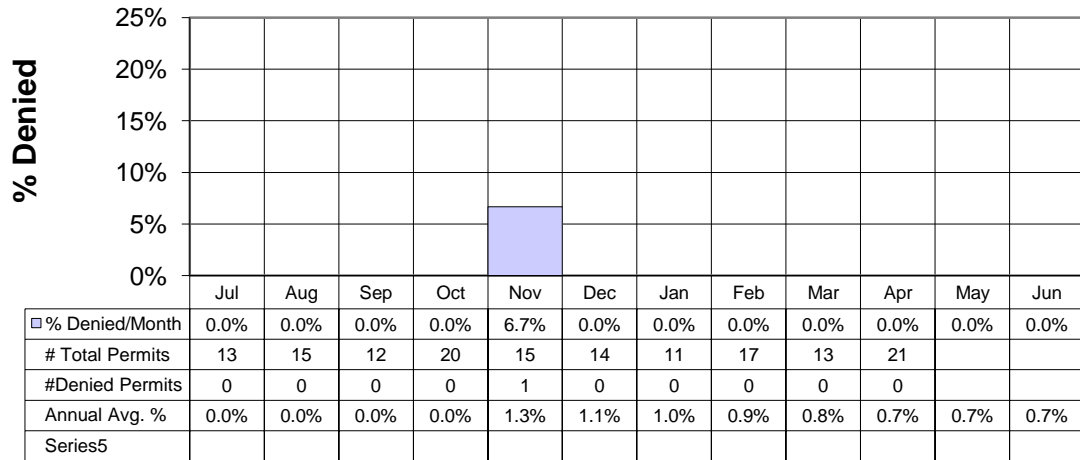
*Excludes PSD (Maj Mod & New) & NOIs, includes GCP's and technical revisions

**FY 2012 Air Quality
Average Number of Days
to Issue or Deny NSR Permits by Categories**



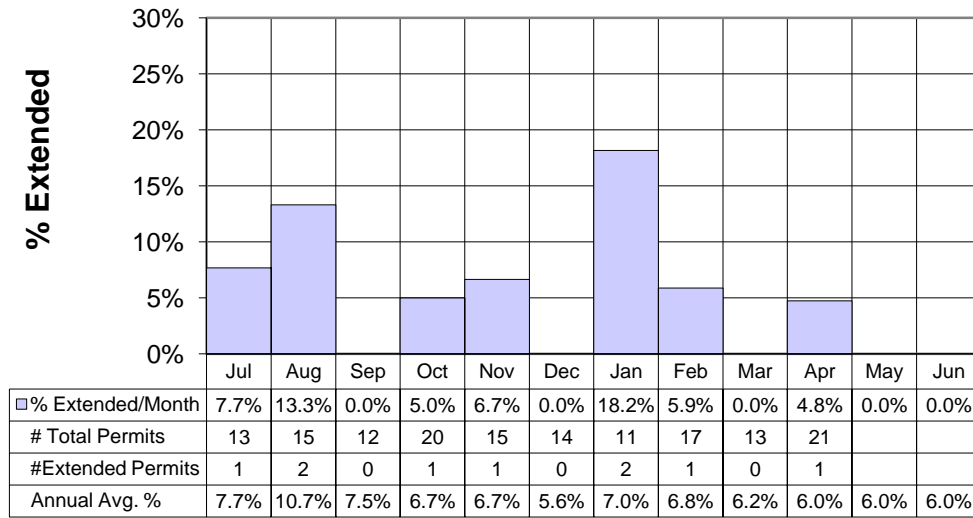
*180 day actions includes 90 day extensions and PSD

**FY 2012 Air Quality
NSR Permit Denials**



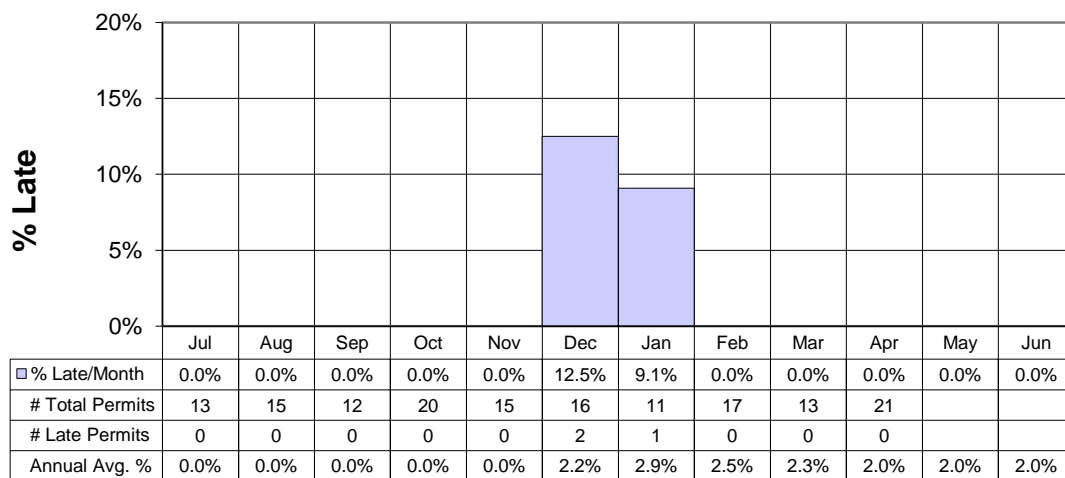
GCP1 - 1649, Tipe Construction

FY 2012 Air Quality Permit Extensions Approved



110M5 - Versado, Monument Gas Plant / 0039M6 - DCP, Linam Ranch Gas Plant / 3295M1 - Mesa Verde Crushing Plant 600 TPH / 0298M5 - Freeport-McMoRan, Chino Mines Co. / 4512 - C & E Concrete, Pulverized Limestone Crushing Operation / 4561 - SPS, Quay County Generating Plant / 4573 - International Isotopes Fluorine Products Facility / 0879M3 - C&E Concrete, Tinaja Pit / 1313M5 - ConocoPhillips, Wingate Frac Plant

FY 2012 Air Quality NSR Permit Issuance Delinquencies



3594 - JHC, Crusher No 3 / 3691 - JHC, Hot Mix Asphalt No 3 / 4053 - J D Heiskell Co, Portales Plant

